



CHAROLITAS _ Vassoi in differenti forme e finiture. | Trays in different shapes and finishes.



CHAROLITA 1 _ Vassoio in massiccio di noce, con dettaglio in ottone, finitura bronzo antico. | Tray in solid walnut with detail in brass, antique bronze finish.



CHAROLITA 2 _ Vassoio con struttura laccato opaco Nuances Bellavista Collection ed inserto centrale in cuoio. Maniglie in ottone, finitura Bronzo antico con incisione del logo. | Tray in lacquered matte finish Nuances Bellavista with central insert in saddle-leather. Handles in brass, Antique Bronze finish with Engraved logo.



CHAROLITA 3 _ Vassoio in massiccio di Frassino Olivato tinto moka. Dettaglio in ottone, finitura Bronzo Antico con incisione del logo Bellavista. Fondo vassoio decorato con strisce orizzontali in legno massello di frassino. | Tray in moka stained Olive ashwood. Details in brass, Antique Bronze finish with Engraved Bellavista logo. Tray base adorned with solid ashwood strips..

CHAROLITA_s

Vassoi.

Charolita 1: Struttura in massiccio di noce o tulipier per versione laccato opaco o lucido Nuances Bellavista Collection. Dettaglio in ottone, finitura Bronzo Antico.

Charolita 2: Struttura in massiccio di Toulipier laccato opaco o lucido colore Nuances Bellavista Collection. Maniglie in ottone, finitura Bronzo antico con incisione del logo Bellavista. Inserto centrale in cuoio con cuciture in contrasto.

Charolita 3: Struttura in massiccio di Frassino Olivato tinto moka. Dettaglio in ottone, finitura Bronzo Antico con incisione del logo Bellavista. Fondo vassoio decorato con strisce orizzontali in legno massello di frassino.

Trays.

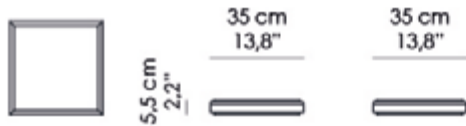
Charolita 1: Structure in solid Walnut or Tulipier for lacquered matte or glossy finish Nuances Bellavista Collection. Detail in brass, Antique Bronze finish.

Charolita 2: Structure in solid toulipier wood, lacquered matte or glossy finish Nuances Bellavista Collection. Handles in brass, Antique Bronze finish with Engraved Bellavista logo. Central insert in saddle-leather with contrasting stitches.

Charolita 3: Structure in moka stained Olive ashwood. Details in brass, Antique Bronze finish with Engraved Bellavista logo. Tray base adorned with solid ashwood strips.

AC-24-A

CHAROLITA 1



Misure | Size
35x35x H 5.5 cm
(13.8''x13.8''x H 2.2'')

FINITURE STANDARD | STANDARD FINISHES



RAL | *Laccato opaco-lucido*
Matte-glossy lacquered



NC | *Noce Canaletto Naturale*
Natural American Walnut



NCS | *Noce Canaletto Scuro*
Dark American Walnut



NCM | *Noce Canaletto Moka*
Moka American Walnut

DETTAGLI | DETAILS



OBA | *Bronzo Antico (su Ottone)*
Antique Bronze (on Brass)

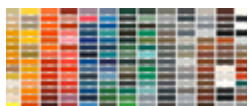
AC-24-B

CHAROLITA 2



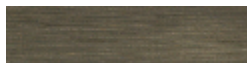
Misure | Size
35x28x H 6 cm
(13.8''x11''x H 2.4'')

FINITURE STANDARD | STANDARD FINISHES



RAL | *Laccato opaco-lucido*
Matte-glossy lacquered

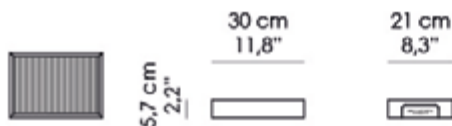
MANIGLIE | HANDLES



OBA | *Bronzo Antico (su Ottone)*
Antique Bronze (on Brass)

AC-24-B

CHAROLITA 3

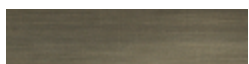


Misure | Size
30x21x H 5.7 cm
(11.8''x8.3''x H 2.2'')

FINITURE STANDARD | STANDARD FINISHES

Frassino Olivato tinto Moka
Moka stained Olive ashwood

MANIGLIE | HANDLES



OBA | *Bronzo Antico (su Ottone)*
Antique Bronze (on Brass)