

FRANCIS



FRANCIS_ Tavolino, versione ovale con base in metallo finitura brandy e top in ebano | Coffee oval table, base in metal brandy finish with top in ebony



FRANCIS_ Dettaglio top intarsiato | Closeup: inlaid top



FRANCIS_ Dettaglio base in metallo, finitura bronzo | Close up of the base, in bronze finish.



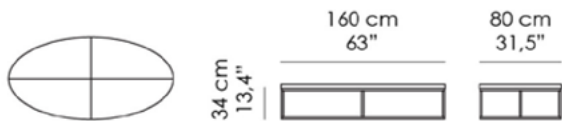
FRANCIS_ Dettaglio spessore top | Closeup: thickness detail top.

FRANCIS

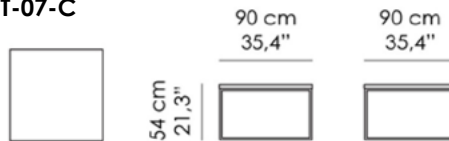
Pascal Arquitectos Design
Tavolino da caffè. Struttura in metallo finitura Bronzo (VBRO) o Brandy (VBRA).
Top in listellare di pioppo italiano, spessore 4 cm, impiallacciato con legni
Europei o esotici o laccato (da scala RAL), in finitura lucido o opaca.

Pascal Arquitectos Design
Coffee and Side Table. Base in metal, with Bronze (VBRO) or Brandy (VBRA)
finish. Top in Italian poplar blockboard, 4 cm thickness, veneered with real
European or exotic woods or lacquered (color from RAL chart), glossy or
matte finish.

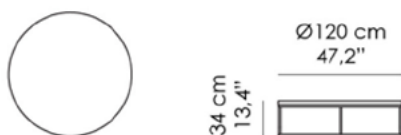
T-07-A



T-07-C



T-07-D



T-07-E



FINITURE STANDARD | STANDARD FINISHES



VBRA | Verniciato Brandy
Brandy Finish



VBRO | Verniciato Bronzo
Bronze Finish

TOP | TOP



NC | Noce Canaletto Naturale
Natural American Walnut



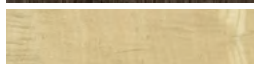
NCS | Noce Canaletto Scuro
Dark American Walnut



NCM | Noce Canaletto Moka
Moka American Walnut



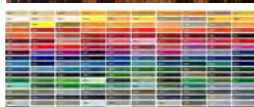
SG | Sucupira Grigio
Grey Sukupira



SY | Sicomoro Naturale
Natural Sycamore



E | Ebano
Ebony



RAL | Laccato opaco
Matte lacquered



RG | Rovere Grigio
Grey Oak



RM | Rovere Moka
Moka Oak



RN | Rovere Naturale
Natural Oak



RS | Rovere Smoke
Smoke Oak



EFS | Eucalipto Friseè scuro
Dark Eucalyptus Friseè



P | Palissandro
Rosewood