



EROS_ Tavolino con struttura in metallo, finitura bronzo con top in sucupira grigio | Coffee and side table, base in metal bronze finish with top in grey sukupira.



EROS_ Ambientazione. | Room setting.



EROS_ Tavolino struttura in metallo, finitura bronzo con top in sucupira grigio | Coffee table, base in metal bronze finish with top in grey sukupira.



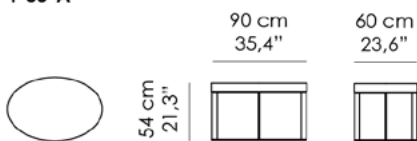
EROS_ Tavolini con base in finitura bronzo e top, da sinistra, in palissandro e rovere moka. | Side tables with base in bronze finish, top (from the left) in rosewood and moka oak.

EROS

Pascal Arquitectos Design
Tavolino da caffè. Struttura in metallo finitura Bronzo (VBRO) o Brandy (VBRA). Top in listellare di pioppo italiano, spessore 8 cm, impiallacciato con legni Europei o esotici.

Pascal Arquitectos Design
Coffee and Side Table. Base in metal, with Bronze (VBRO) or Brandy (VBRA) finish. Top in Italian poplar blockboard, 8 cm thickness, veneered with real European or exotic woods.

T-05-A



T-05-C



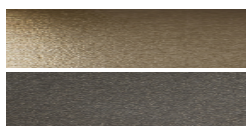
T-05-B



T-05-D



FINITURE STANDARD | STANDARD FINISHES



VBRA | Verniciato Brandy
Brandy Finish

VBRO | Verniciato Bronzo
Bronze Finish

TOP | TOP



RG | Rovere Grigio
Grey Oak

RM | Rovere W Moka
Moka Oak

RN | Rovere Naturale
Natural Oak

NC | Noce Canaletto Naturale
Natural American Walnut

NCS | Noce Canaletto Scuro
Dark American Walnut

NCM | Noce Canaletto Moka
Moka American Walnut

SY | Sicomoro Naturale
Natural Sycamore

EFS | Eucalipto Friseè scuro
Dark Eucalyptus Friseè

SG | Sucupira Grigio
Grey Sukupira

P | Palissandro
Rosewood

E | Ebano
Ebony