



EROS_ Tavolino con struttura in metallo, finitura bronzo con top in sucupira grigio | Coffee and side table, base in metal bronze finish with top in grey sukupira.



EROS_ Tavolino struttura in metallo, finitura bronzo con top in sucupira grigio | Coffee table, base in metal bronze finish with top in grey sukupira.



EROS_ Vista dall'alto dettaglio top in sucupira grigio | Top view: top detail in grey sukupira.



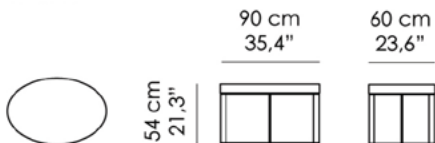
EROS_ Tavolini con base in finitura bronzo e top, da sinistra, in palissandro e rovere moka. | Side tables with base in bronze finish, top (from the left) in rosewood and moka oak.

EROS

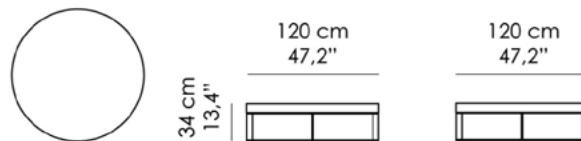
Pascal Arquitectos Design
Tavolino da caffè. Struttura in metallo finitura Bronzo (VBRO) o Brandy (VBRA).
Top in listellare di pioppo italiano, spessore 8 cm, impiallacciato con legni
Europei o esotici

Pascal Arquitectos Design
Coffee and Side Table. Base in metal, with Bronze (VBRO) or Brandy (VBRA)
finish. Top in Italian poplar blockboard, 8 cm thickness, veneered with real
European or exotic woods.

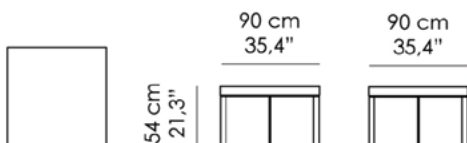
T-05-A



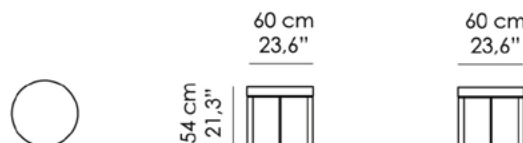
T-05-C



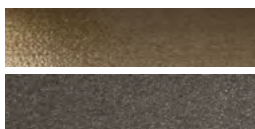
T-05-B



T-05-D



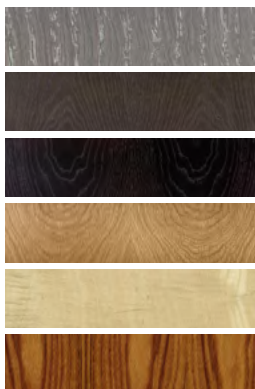
FINITURA STANDARD | STANDARD FINISHES



VBRA | Verniciato Brandy
Brandy Finish

VBRO | Verniciato Bronzo
Bronze Finish

TOP | TOP



RS | Rovere Smoke
Smoke Oak

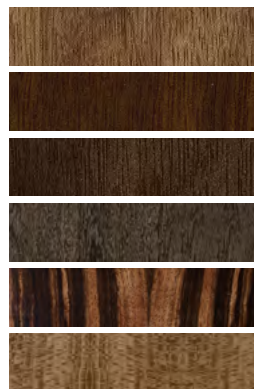
RG | Rovere Grigio
Grey Oak

RM | Rovere Moka
Moka Oak

RN | Rovere Naturale
Natural Oak

SY | Sicomoro Naturale
Natural Sycamore

P | Palissandro
Rosewood



NC | Noce Canaletto Naturale
Natural American Walnut

NCS | Noce Canaletto Scuro
Dark American Walnut

NCM | Noce Canaletto Moka
Moka American Walnut

SG | Sucupira Grigio
Grey Sukupira

E | Ebano
Ebony

EFS | Eucalipto Friseè scuro
Dark Eucalyptus Friseè